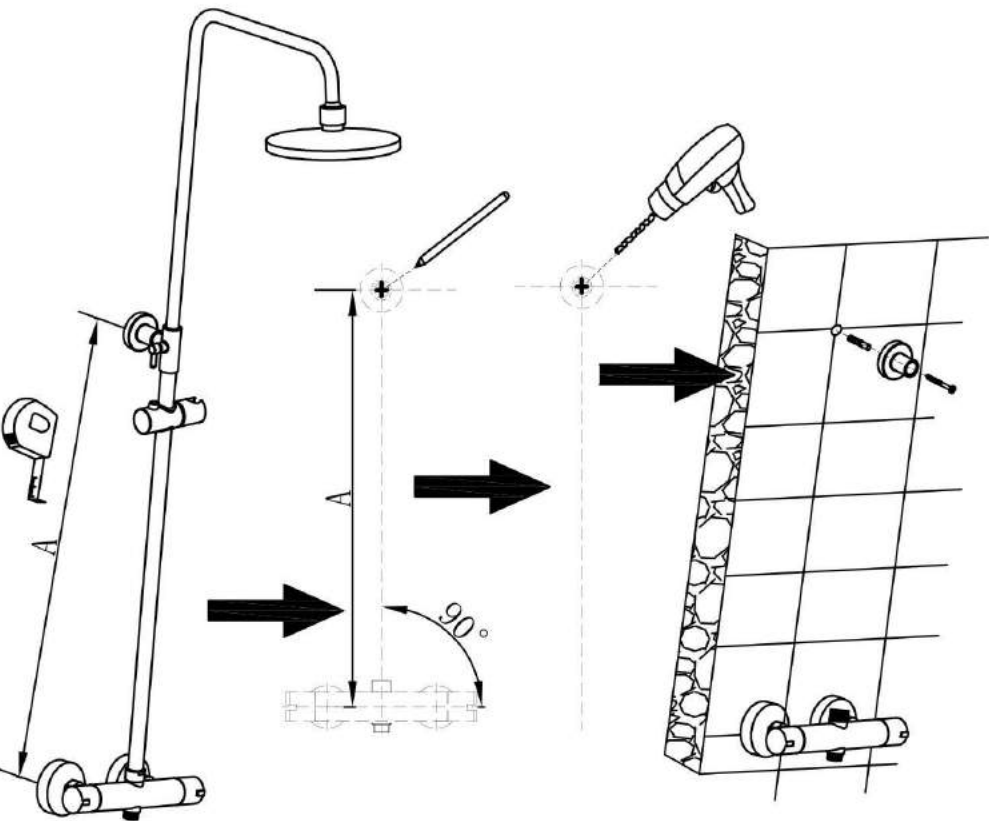
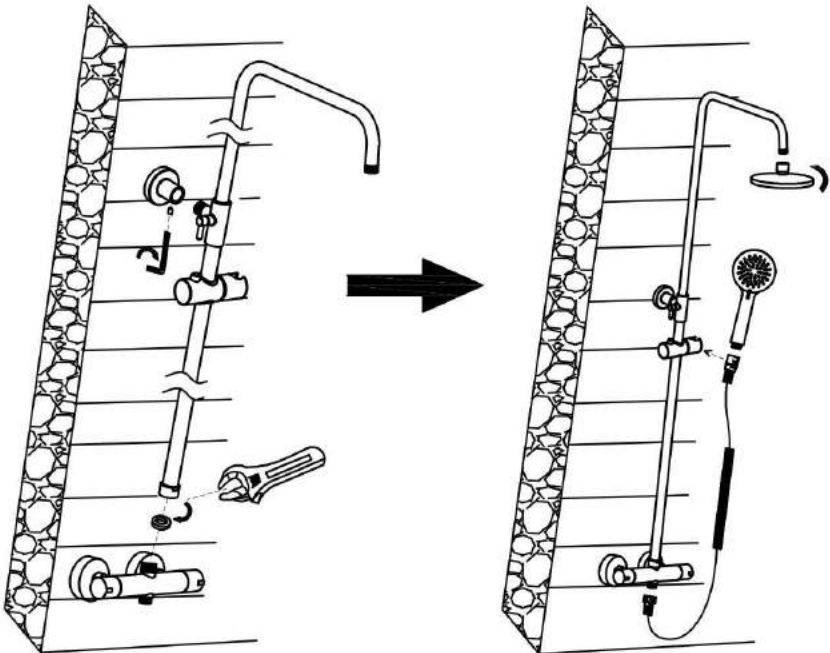


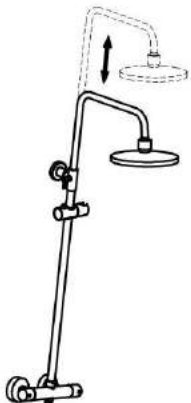
3. Measure the installation height of the shower kit with a tape measure. Check there are no wires or pipes before marking the two holes required. Drill holes properly with electric drill and place the wall plugs into the holes. Fit the cap into the fixing plate.



4. Align the shower bar valve and rail connector and tighten the nut using an adjustable spanner. Please place a cotton cloth inside the spanner to prevent any scratches. Tighten grub screw to the fixing plate with Allen key to secure the rail to the wall. Finally connect the shower handset to the shower hose, the hose to the bar valve outlet, and the shower head to the riser rail.



5. Adjust the height of sliding rail suitably.
6. Turn on the water supplies and check for correct operation.
7. Run hot water through the shower hose to make it fall correctly.



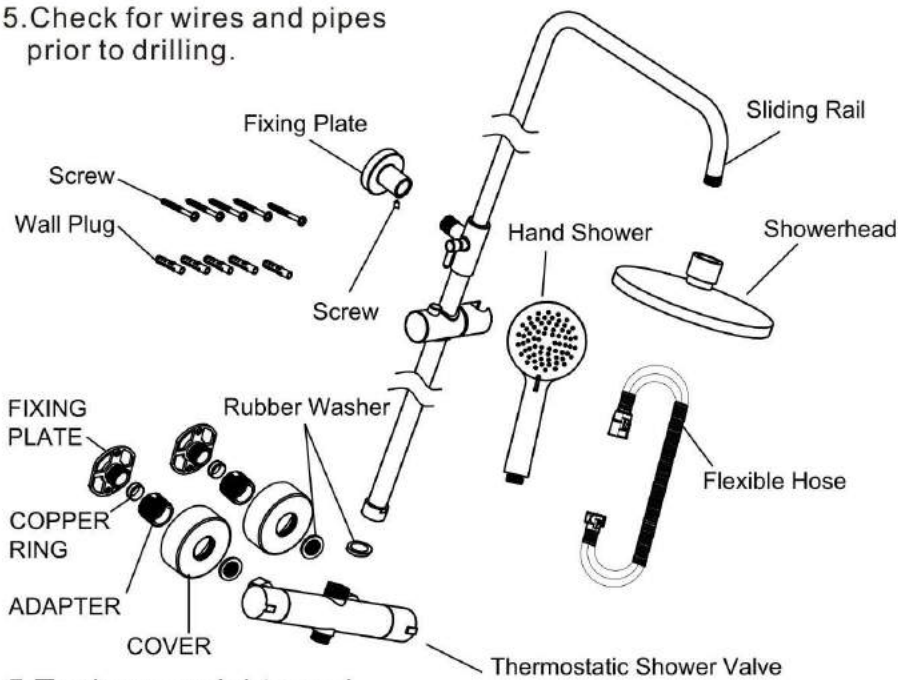
### III. After Care

1. This shower kit has a high quality finish and should be treated with care.
2. An occasional wipe with a mild washing-up liquid on a soft damp cloth followed by a thorough rinsing is all that is required.
3. Do not use an abrasive or chemical household cleaner as this may cause damage.

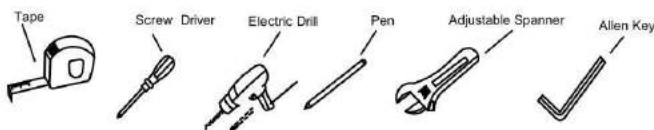
## Thermostatic Shower Kit Installation Instruction

### I .Before Installation

1. Flush out pipework thoroughly to remove debris.
2. Turn off water supply.
3. Carefully take the kit out of the box in case of any scratches, wearing cotton gloves if possible.
4. Identify all components.
5. Check for wires and pipes prior to drilling.

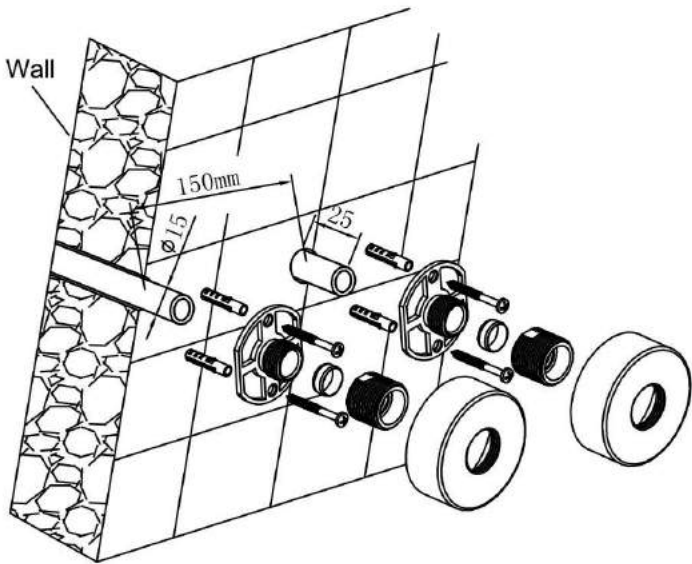


### 5. Tools you might need.



### II. Installation Procedure

1. Place two fixing plates on hot & cold inlets and mark fixing holes, drill four holes of  $\varnothing 8\text{mm}$  diameter with depth of 45mm. Fix the fixing plates against wall, put in wall plugs and fixing screws with screwdriver. Place copper rings inside the fixing plates, then tighten and seal with adapter. Finally put wall covers on and tighten properly.



2. Fix the connector of shower valve with rubber washer to adaptor with spanner. Please use a cotton sheet inside of spanner in case of any scratches. Make sure hot inlet on the left and cold inlet on right ,otherwise it will affect the performance.

